

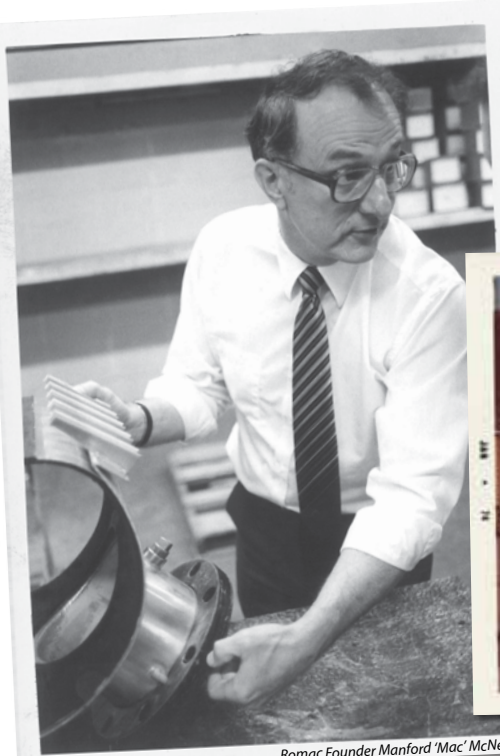
# **ROMAC** INDUSTRIES, INC.

Quality & Innovation, Manufactured in the U.S.A.

Repair Clamps • Couplings • Expansion Joints • Pipe Restraint • Service Saddles  
Dismantling Joints • Tapping Sleeves • Tapping Machines  
HDPE Pipe Products • Line-Stop & Valve Insertion • Waterworks Tools



1.800.426.9341 • [www.romac.com](http://www.romac.com)



Romac Founder Manford 'Mac' McNeil.

## BEGINNINGS

In 1969 Manford 'Mac' McNeil started Romac with two employees in a small warehouse in Bellevue, WA - a suburb of Seattle. It was then that Mac introduced the first all stainless steel repair clamp.



1974 - Romac's second home on Lane Street in Seattle, WA.

Armed with a great product and propelled by a commitment to providing customers with **first-rate customer service** and **lightning fast product delivery**, Romac experienced remarkable growth.



## ROMAC ORIGINALS

In the following years Romac pushed to develop new ideas into inventive products that no one in the industry had seen.

- Color-coded ductile iron couplings.
- Nylon coated service saddles.
- Two-bolt ductile iron couplings.
- All stainless steel tapping sleeves.

Many of these new "better-way" products are now industry standards.



Autopour in Romac's Foundry, Sultan WA (40 miles NW of Seattle, WA).

## QUALITY CONTROL

We pour our ductile iron parts in our foundry, mold our own gaskets and we even make the threaded fasteners on many of our products.

Because we keep nearly all phases of manufacturing in-house, the supply chain is simplified and extremely efficient. Parts are made to our exact specifications and design changes can be made quickly.

Our customers enjoy our ability to quickly provide custom products designed to meet unique requirements.



## FASTEST POSSIBLE DELIVERY

Our extensive inventory is now shipped out of one of our facilities in Seattle WA, Dallas TX and Charlotte NC. The strategic location of these operations allow us to deliver Romac products nearly anywhere in the country in two days or less.



Current Romac headquarters in Bothell (20 miles north of Seattle, WA).

## TODAY

We're a little bigger, but our commitment to serving our customers and our customer's customers is as evident today as it was over 40 years ago.



# ROMAC COUPLINGS

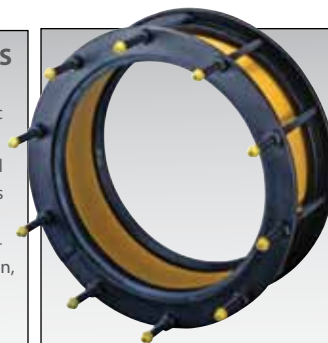


## 501 COLOR CODED COUPLINGS

Straight, transition and long barrel couplings. Introduced in 1970, the Romac 501 was the first color coded ductile iron coupling. Its interchangeable gaskets and end rings help to reduce inventory. Meets AWWA C219.

USE: Flexibly couple pipes of same or different diameters. For use on steel, cast iron, asbestos cement, plastic and other types of pipe.

SIZES: 2" - 24".



## 400 FABRICATED STEEL COUPLINGS

Fabricated steel coupling for pipe sizes 12" and larger. Meets AWWA C219.

USE: Flexibly couples pipes of same diameters. For use on steel, cast iron, asbestos cement, plastic and other types of pipe.

Also available with full restraint (400RG)

SIZES: 12" - 96" (larger sizes available upon request).



### RC501

USE: Used to flexibly couple pipes of different diameters. For use on steel, cast iron, asbestos cement, plastic and other types of pipe.

SIZES: 3" - 24".



### IC501

USE: Used to couple pipes of dissimilar metals. For use on steel, cast iron and other types of metallic pipe.

SIZES: 4" - 14".



### EC501

USE: Testing or capping of a pipeline. For use on steel, cast iron, asbestos cement, plastic and other types of pipe.

SIZES: 4" - 16".



### FCA501

USE: To provide a flanged to plain-end connection. For use on steel, cast iron, asbestos cement, plastic and other types of pipe.

SIZES: 3" - 16".



### FC400

USE: Used to flexibly couple pipes of different diameters. For use on steel, cast iron, asbestos cement, plastic and other types of pipe.



### RC400

USE: Used to couple pipes of dissimilar metals. For use on steel, cast iron and other types of metallic pipe.



### TC400

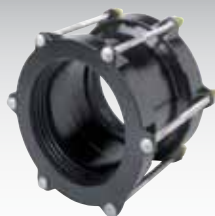
USE: Connects pipes of different known outside diameters in the same nominal size. For use on steel, cast iron, asbestos cement, plastic and other types of pipe.



### IC400

USE: To provide a flanged to plain-end connection. For use on steel, cast iron, asbestos cement, plastic and other types of pipe.

## EXTENDED RANGE COUPLINGS



### XR501

USE: Flexibly couples pipe of widely different diameters (a range of IPS through Class 200 AC Pipe). For use on steel, cast iron, asbestos cement, plastic and other types of pipe.

SIZES: 4" - 12".



### MACRO™ - Two bolt coupling

USE: Flexibly couples pipes of widely differing diameters. For use on steel, cast iron, asbestos cement, plastic and other types of pipe.

SIZES: 4" - 12".

## SPECIALTY COUPLINGS



### FCG

USE: Provides a flexible flanged to plain-end connection.

SIZES: 3" - 12".



### 702

USE: Flexibly couples pipes of same diameters. For use on steel or plastic pipe.

SIZES: 1/2" - 2".



### 511

USE: Flexibly couples pipes of the same or different diameters. For use on steel, copper and PVC pipe.

SIZES: 1/2" - 12".



### ARMOR LINK

USE: Couples pipes of same diameters. For use on steel, cast iron, A/C, concrete, PVC and HDPE pipe.

SIZES: 4" - 24".

## DISMANTLING JOINTS



### DJ400

Adjustable telescoping restraint with tie-rods.

SIZES: 3" - 96".



### DJ405

Adjustable telescoping restraint.

SIZES: 3" - 24".

Ideal for systems that require periodic maintenance, Romac Dismantling Joints can be adjusted to a desired length to allow access for installation or removal of valves and other fittings.

## RESTRAINT COUPLINGS



### 400RG & 400RG-PVC

USE: Couples pipe and provides restraint.

SIZES: 12" - 48".



### ARMOR LOCK

USE: Couples pipe and provides restraint.

SIZES: 4" - 12".



### ALPHA

USE: Couples pipe and provides restraint.

SIZES: 4" - 12".

## EQUIPMENT CONNECTION FITTING



### ECF400

Equipment connection fitting.

Used to provide offset, deflection and restraint for systems with misaligned flanges.

SIZES: 3" - 96".



## EXPANSION JOINTS

Steel expansion joints. For use in pipelines where larger than usual longitudinal movements are concentrated. For use on steel, cast iron, plastic and other types of pipe.

SIZES: 3" - 96".

# ROMAC REPAIR CLAMPS

## ALL STAINLESS STEEL REPAIR CLAMPS

Provides full circumferential repair of splits and holes. For use on steel, cast iron, asbestos cement, plastic and other types of pipe.  
**Tapped outlets available.**

**SS1** - single section, 2"-12" (.40" range).

**SS2** - two section, 4"-14" (.80" range).

**SS3** - three section, 10" and larger (1.20" range).

## CAST LUG REPAIR CLAMPS

Provides full circumferential repair of splits and holes. For use on steel, cast iron, asbestos cement, plastic and other types of pipe.  
**Tapped outlets available.**

**CL1** - single section, 2"-12" (.40" range).

**CL2** - two section, 4"-14" (.80" range).

**CL3** - three section, 10" and larger (1.20" range).

## SPECIALTY REPAIR CLAMPS

### SC

USE: Repair splits and holes in steel, cast iron, asbestos cement, plastic and other types of pipe.  
SIZES: 1/2" - 8".

### C

USE: Used to repair splits and holes. For use on steel, cast iron and asbestos cement pipe.  
SIZES: 1/2" - 12".

### SCC & SCS

USE: Full circumferential repair for steel and copper pipe.  
SIZES: 1/2" - 2".

### CC

USE: Repair splits and holes in steel, cast iron, asbestos cement, plastic and other types of pipe.  
SIZES: 10" - 30".

### ARMOR SEAL

USE: Provides full circumferential repair of splits, holes and breaks. Can also be used as a coupling.  
SIZES: 4" - 24".

### A/C ME BAND

USE: Repair broken or leaking A/C couplings.  
SIZES: 4" - 16".

## BELL JOINT LEAK CLAMPS

### 416 & 418

USE: For repair or prevention of leaks in caulked or rubber gasketed joints on ductile iron pipe. 418 is for use on cast iron pipe.  
SIZES: 12" - 24".

### 516

USE: For the repair or prevention of leaks in bells, caulked or rubber ring joints. For use on cast iron, ductile iron and C900 PVC pipe.  
SIZES: 4" - 14".

### 517

USE: For repair or prevention of leaks in bells or rubber ring joints. For use on IPS PVC pipe.  
SIZES: 4" - 12".

# ROMAC SEWER PRODUCTS

## CB SEWER SADDLE

USE: For use on steel, cast iron, A/C, plastic and other types of pipe.

SIZES: 6" - 56".

## 501 COUPLING FOR SEWER

USE: Flexibly couples pipe of same or different diameters. For use on steel, cast iron, asbestos cement, plastic and other types of pipe.

SIZES: 4"-12".

## LSS1, LSS2 & LSS3

USE: Provides repair of splits and holes in steel, cast iron, A/C, plastic and other types of pipe.

SIZES: 4" - 24".

## TRANSITION CLAMP FOR SEWER

USE: Joins sewer pipe of different diameters. For use on steel, cast iron, asbestos cement, plastic and other types of pipe.

SIZES: 4" - 20".

## SEWER GASKETS

A/C x PVC transition gaskets.  
Sizes: 4" - 8".

MJ x SDR35 (PVC sewer) transition gaskets.  
Sizes: 4" - 24".

LCT Manhole adapter gaskets.  
Sizes: 4" - 27".

# MISCELLANEOUS

## MJ ACCESSORY PACK

Includes ductile iron gland, gasket, t-bolts and nuts.

SIZES: 2" - 12".

## HYDRANT GASKETS

Valve gaskets compatible with most common fire hydrants.

SIZES: 5" - 5 1/2".

## GASKETS

Romac manufactures gaskets for many water and wastewater applications.



# ROMAC SERVICE SADDLES



## 101 SERVICE SADDLES

Romac 101 single-strap service saddles are cast of ductile iron poured in our own U.S. foundry. A wide variety of outlets, coatings, and strap materials are available. You choose the configuration which matches your requirements.

FOR PIPE SIZES: 1 1/2" - 12".  
OUTLET SIZES: 1/2" - 2 1/2".



**101U**  
Shop coat with u-bolt.



**101NU**  
Nylon coated with u-bolt.



**101S**  
Shop coat with stainless steel strap.



**101NS**  
Nylon coated with stainless steel strap.



## 202 SERVICE SADDLES

Romac 202 dual-strap service saddles are cast of ductile iron poured in our own U.S. foundry. A wide variety of outlets, coatings, and strap materials are available. You choose the configuration which matches your requirements.

FOR PIPE SIZES: 2" - 24".  
OUTLET SIZES: 1/2" - 2 1/2".



**202U**  
Shop coat with u-bolt.



**202NU**  
Nylon coated with u-bolt.



**202S**  
Shop coat with stainless steel strap.



**202NS**  
Nylon coated with stainless steel strap.



## BRONZE SERVICE SADDLES

Romac single and dual strap service saddles are available with a variety of outlets, and straps. You choose the configuration which matches your requirements.

FOR PIPE SIZES: 1 1/2" - 12".  
OUTLET SIZES: 1/2" - 2 1/2".



**101B**  
Single bronze strap.



**101BS**  
Single stainless steel strap.



**202B**  
Dual bronze straps.



**202BS**  
Dual stainless steel straps.



## 304

All stainless steel service saddle. For use on steel, cast iron, plastic and other types of pipe.

FOR PIPE SIZES: 2" - 8".  
OUTLET SIZES: 3/4" - 1".



## 305

All stainless steel service saddle. For use on steel, cast iron, plastic and other types of pipe.

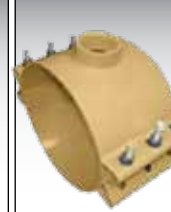
FOR PIPE SIZES: 10" - 24".  
OUTLET SIZES: 3/4" - 3".



## 306

All stainless steel service saddle. For use on steel, cast iron, plastic and other types of pipe.

FOR PIPE SIZES: 2" - 12".  
OUTLET SIZES: 3/4" - 2".



## FTS420T

Fabricated steel tapping saddle. For use on steel, cast iron, A/C, plastic and other types of pipe.

FOR PIPE SIZES: 10" - 24".  
OUTLET SIZES: 3/4" - 4".

# ROMAC TAPPING SLEEVES



## SST™

The original all stainless steel tapping sleeve with a full circumferential seal. Available with ductile iron flange, stainless steel flange or MJ outlet. Meets MSS SP-124 and AWWA C223.

FOR PIPE SIZES: 4" - 24".  
OUTLET SIZES: up to 12".

## SSTMJ

SST with MJ outlet



## SST III™

All stainless steel tapping sleeve with triangular sidebars, and full circumferential seal. Available with ductile iron flange, stainless steel flange or MJ outlet. Meets MSS SP-124 and AWWA C223.

FOR PIPE SIZES: 4" - 30".  
OUTLET SIZES: up to 12".

## SST III MJ

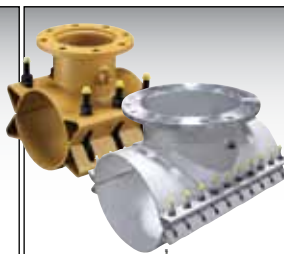
SSTIII with MJ outlet.



## FTS419

Fabricated steel tapping sleeve with drop-in bolts. Meets the requirements of MSS SP-124, and AWWA C223.

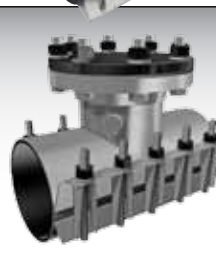
FOR PIPE SIZES: 4" - 24".  
OUTLET SIZES: 3" - 12".



## FTS420 & STS420

Fabricated tapping sleeves with triangular side bars. Meets the requirements of MSS SP-124 and AWWA C223.

FOR PIPE SIZES: 6" - 42".  
OUTLET SIZES: 3" - 24".



## SST-X

Stainless steel line stopping sleeve.

Compatible with most line stopping equipment.

FOR PIPE SIZES: 4" - 12".



## FTS425

Fabricated steel tapping sleeve with side and end gasket seals.

FOR PIPE SIZES: 12" - 96" (larger sizes upon request).  
OUTLET SIZES: 4" through size-on-size..



## FTS435

Fabricated steel tapping sleeve for all sizes of concrete steel cylinder pipe.

OUTLET SIZES: Determined by application.



## FTS445

Fabricated steel tapping sleeve for weld-on outlets.

FOR PIPE SIZES: 6" - 96".  
OUTLET SIZES: 4" - 24".

# ROMAC RESTRAINT SYSTEMS



## GRIP RING™

Full circumferential pipe restraint. The GripRing uses a standard mechanical joint gasket and t-bolts. There are no radial bolts for the installer to forget to tighten. When the t-bolts on the gland are tightened, the GripRing restraint is engaged.

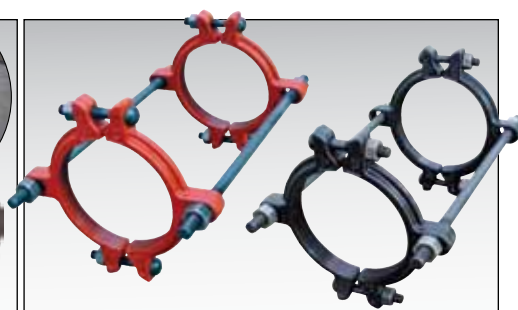
FOR PIPE SIZES: 4" - 12".



## PIRANHA™ RESTRAINT GASKET

Dual function gasket simultaneously seals and restrains. Stainless steel teeth vulcanized into the rubber, grip and hold the pipe in place. For pipe compatibility, see Romac catalog.

CURRENTLY FOR PIPE SIZES: 4" - 12".

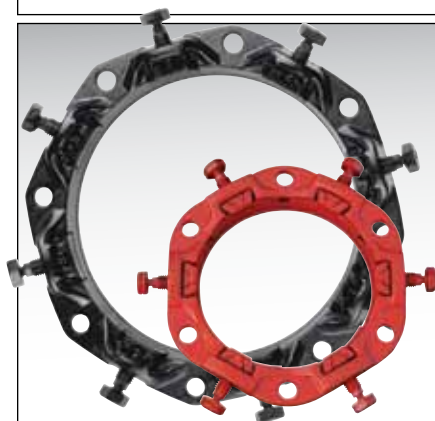


## 600 Series

Provides restraint for bell and spigot joints, transitions, couplings and mechanical joints.

For use on ductile iron, C900 and IPS size PVC.

FOR PIPE SIZES: 4" - 12".



## RomaGrip™

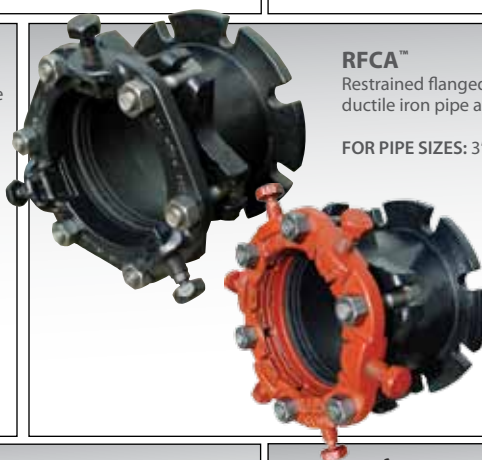
Lug style mechanical joint restraint for use on ductile iron pipe and steel pipe (3 - 12 inch).

FOR PIPE SIZES: 3" - 48".

## PVC-RomaGrip™

For use on C900 4 - 12 inch, C905 14 - 24 inch and IPS PVC 3 - 12 inch Class 160 and greater, Sch 40 and 80. Contact Romac for C909 and thin wall IPS (less than Class 160, etc.).

FOR PIPE SIZES: 3" - 24".



## RFCA™

Restrained flanged coupling adapter for use on ductile iron pipe and steel pipe (3 - 12 inch).

FOR PIPE SIZES: 3" - 24".

## PVC-RFCA™

Restrained flanged coupling adapter for use on PVC pipe.

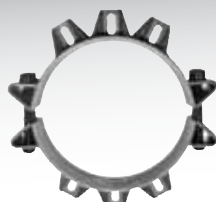
FOR PIPE SIZES: 3" - 24".



## 400RG

Fully restrained coupling for use on ductile iron. Used to couple and restrain plain-end ductile iron pipe.

FOR PIPE SIZES: 12" - 48".



## 470

Pipe restraint for mechanical joint fittings, bell and spigot joints and bolted sleeve type couplings. For use on PVC pipe.

FOR PIPE SIZES: 14" - 30".



## FIELD FLANGE

Provides restrained connection to join plain-end pipe to flanged fittings without threading or welding. For use on steel and ductile iron pipe.

FOR PIPE SIZES: 4" - 12".



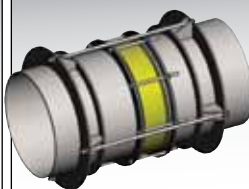
## DUC LUG

Provides restraint for mechanical joints to prevent pull-out for 3/4" rod.



## 90° EYE BOLT

Provides restraint for mechanical joints to prevent pull-out for 3/4" rod.



## M11 Harness Restraint

Provides restraint for mechanical couplings on steel pipelines. For use on steel, cast iron, plastic and other types of pipe.

FOR PIPE SIZES: 6" - 96" for steel pipe. Other sizes available.



## HARNESS LUGS

Provides restraint for flanged connections.

FOR FLANGE SIZES: 3" - 72".

# FJ RESTRAINT FLEXIBLE EXPANSION JOINT

Accommodates expansion, contraction, rotation, offset and settlement all at the same time.

The FJ Flexible Expansion Joint requires no threaded fasteners for assembly. The FJ's advanced design eliminates the need for flanged assembly connections in the casing. By eliminating unnecessary components, the compact design allows a lightweight assembly for ease of installation.

SIZES: 3" - 24". Larger sizes available.



Available with single and double ball joints and flanged or mechanical joint ends.



# ROMAC FABRICATED STEEL DIVISION

Romac's Fabricated Steel division manufactures couplings, flange adapters, tapping sleeves, expansion joints, dismantling joints and accessories. Fabricated steel items are available in standard sizes as shown in the Romac catalog, and are also available in custom sizes and configurations to meet any unique application requirements.

Contact your Romac representative for more information about Romac Fabricated Steel products.

### REPUTATION

Romac Industries, a leader in the waterworks products industry, is known for manufacturing innovative, quality products while providing the best possible customer service - a reputation built over the last 40 years.

### COMMITMENT

The commitment and meticulous care that transform raw materials into finished Romac Catalog items also goes into all custom fabricated items made to customer-specific needs.

### HIGHLY SPECIALIZED ENGINEERING

Romac's staff of licensed professional engineers draw upon decades of highly specialized experience and work with you to provide an economic solution that best fits your project's needs.

### CUSTOM MADE

High quality Romac products produced on state-of-the-art equipment include:

- Large Diameter Products - **fully expanded to 200 inches.**
- Large Diameter Flange Coupling Adapters.
- Custom Fabricated Steel Tapping Sleeves.
- Dismantling Joints & Flexible Connections.
- Expansion Joints.
- Bell Joint Repair Housings & Encasements.
- Pressure ratings up to 600 psi.

### PROVEN RELIABILITY

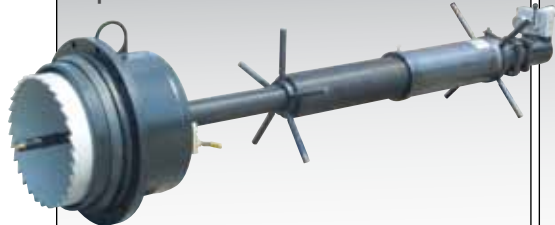
From basic couplings in all sizes, to gigantic tapping sleeves, Romac products feature in thousands of fluid systems worldwide. Various applications include: Water, Wastewater, Power Generation, Pulp Paper Mills, Mining & Industrial Plants.

Romac's reliability and reputation are unsurpassed in delivering trouble-free, custom-built products on time.



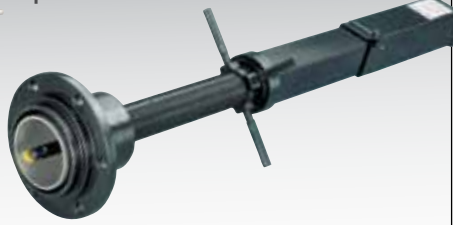
# TRANSMATE WATERWORKS TOOLS

**TapMate XL424™**



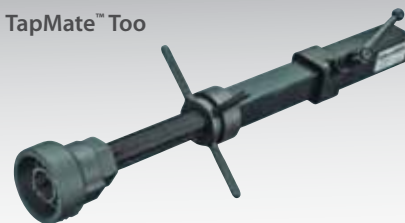
- 4" - 24" taps.
- 300 psi pressure rating.
- Over 39 inches of travel.
- Simple construction allows in-house maintenance and repair.
- Can be used with existing TapMate and QuikValve equipment.
- For use on PVC, A/C, Ductile Iron, Cast Iron, Steel and HDPE pipe.

**TapMate™**



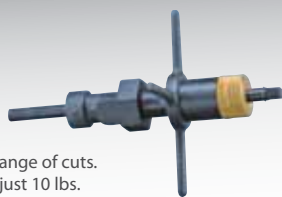
- 3" - 12" taps.
- Weighs just 65 lbs.
- 150 psi pressure rating.
- More than 27 inches of boring bar travel.
- Simple construction allows in-house maintenance and repair.
- For use on PVC, A/C, Ductile Iron, Cast Iron, Steel and HDPE pipe.

**TapMate™ Too**



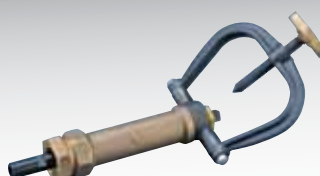
- 3/4" - 2" taps.
- Weighs just 10 lbs.
- 150 psi pressure rating.
- More than 12 inches of boring bar travel.
- Simple construction allows in-house maintenance and repair.
- For use on PVC, A/C, Ductile Iron, Cast Iron, Steel and HDPE pipe.

**M-1™**



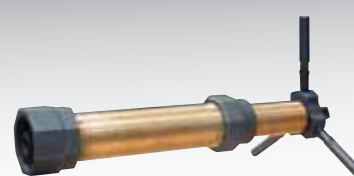
- 3/4" - 1" range of cuts.
- Weighs just 10 lbs.
- Good for wet and dry cuts.
- Uses TapMate Too adapters, arbor and ratchet.
- For use on PVC, A/C, Ductile Iron, Cast Iron, Steel and HDPE pipe.

**5930™**



- 3/4" - 1" range of cuts.
- Good for wet and dry cuts.
- Easy to set-up and use.
- For use on PVC, A/C, Ductile Iron, Cast Iron, Steel and HDPE pipe.

**5935™**



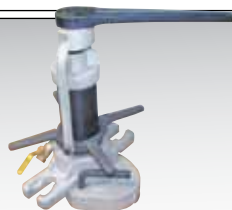
- 3/4" - 2" range of cuts.
- Weighs approximately 40 lbs.
- Easy to set-up and use.
- For use on PVC, A/C, Ductile Iron, Cast Iron and Steel pipe.

**B-1™**



- Inserts any 3/4" - 1" corporation stop under pressure.
- Fast - no disassembly and assembly during installation.
- Simple and easy to operate manually or under power.
- For use on PVC, Ductile Iron and Cast Iron pipe.

**B-Too™**



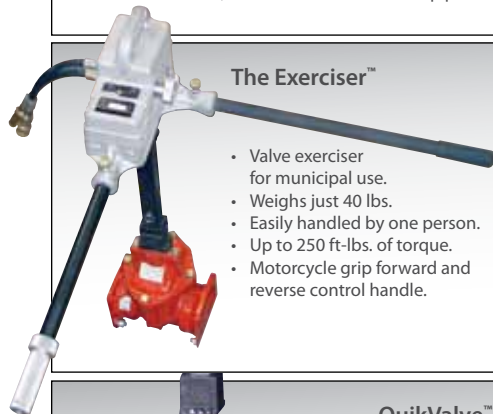
- Inserts any 3/4" - 1" corporation stop under pressure, up to 250 psi.
- Provides greater stability when cutting with the drill-tap and easier alignment when inserting the corporation stop.
- Uses common saddles, drill-taps and screw plugs.
- For use on PVC, Ductile Iron and Cast Iron pipe.

**TapMate Dry Tap™**



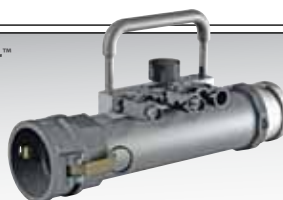
- 3/4" - 1" dry taps.
- Drilling shaft is supported at two points.
- Conforms to pipe sizes 3" - 48"
- For use on PVC, Ductile Iron and Cast Iron pipe.

**The Exerciser™**

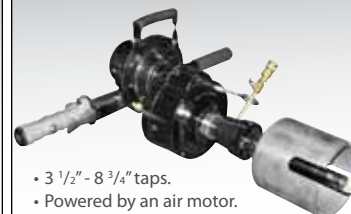


- Valve exerciser for municipal use.
- Weighs just 40 lbs.
- Easily handled by one person.
- Up to 250 ft.-lbs. of torque.
- Motorcycle grip forward and reverse control handle.

**DeChlorinator™**



- Quickly dechlorinates and flushes highly concentrated chlorinated water in new construction situations.
- Allows water utilities to meet regulations for residual chlorine concentration in released water.
- Helps meet EPA, CWA, and SDWA legislation for released water entering receiving streams.



- 3 1/2" - 8 3/4" taps.
- Powered by an air motor.
- Weighs just 39 lbs.
- For use on PVC, Vitriified Clay, Concrete and HDPE pipe.

**QuikValve™**



- Inserts a valve in an operating line without loss of pressure.
- 4" - 8" installations.
- Completion time is less than two hours.
- Can be used in water lines with up to 150 psi ambient pressure.
- For use on Ductile Iron, Cast Iron, A/C and some classes of PVC pipe.

**InsertaValve™**



- Inserts a valve in an operating line without loss of pressure.
- 10" - 12" installations.
- Can be used in water lines with up to 150 psi ambient pressure.
- Completion time is less than two hours.
- For use on Ductile Iron, Cast Iron, A/C and some classes of PVC pipe.

Transmate offers hydraulic, electric, and pneumatic drives to power your tapping and drilling machines.

Transmate offers other tools and accessories designed specifically for use on tapping sleeves, valves and other fittings. For more information about the full line of Transmate products, contact Romac Industries, 1.800.426.9341.